

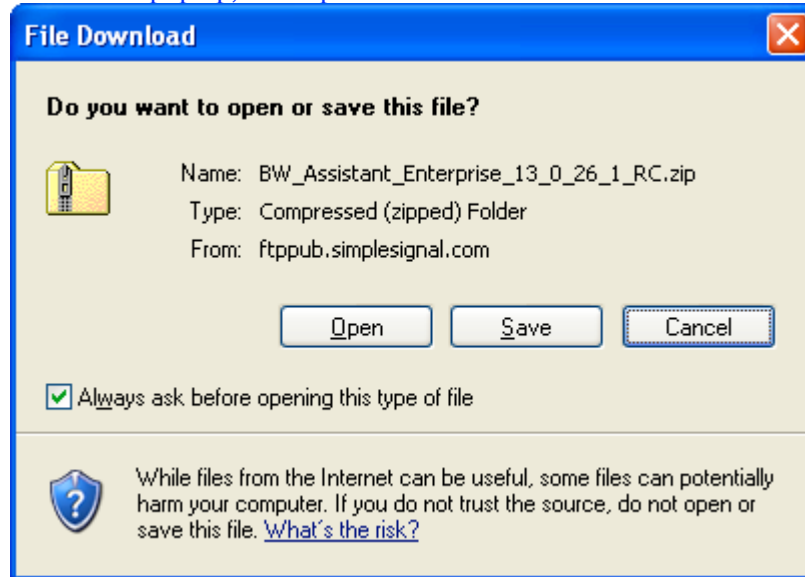
SimpleToolbar Configuration

Note: This toolbar requires provisioning by SimpleSignal Technical Support. Once you install the toolbar, call support at 303-242-8616 for your final settings.

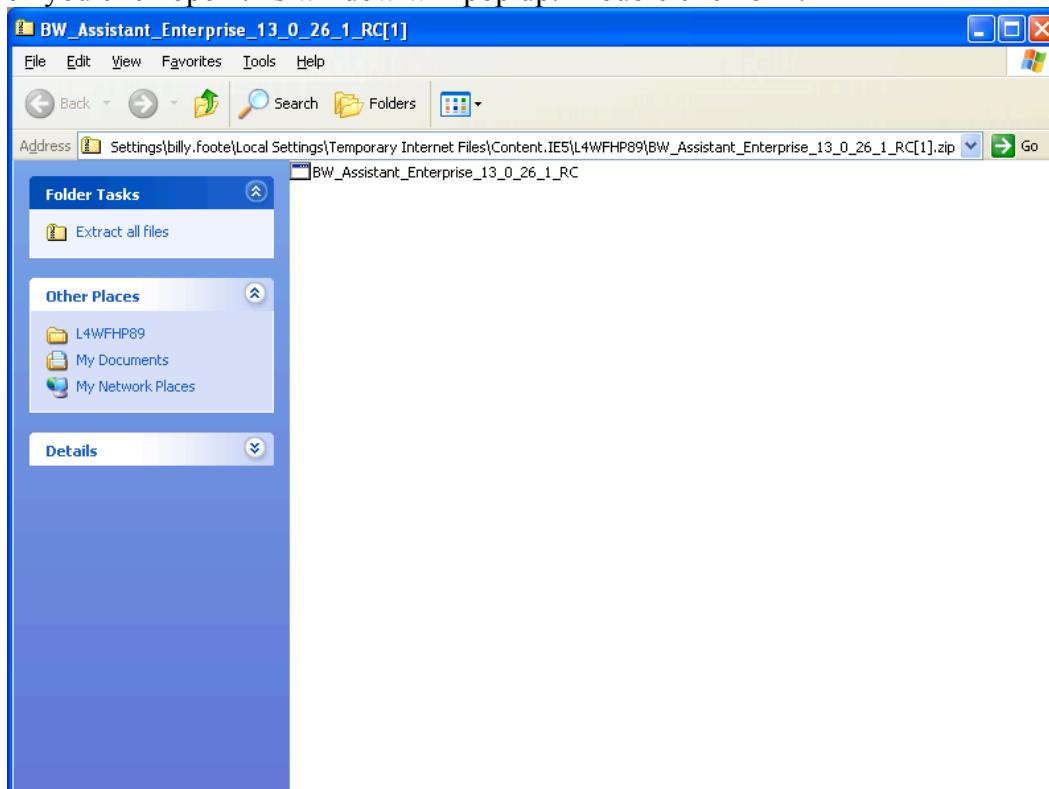
Step one: click on this link-

ftp://ftppub.simplesignal.com/Public/apps/Trials/BW_Assistant_Enterprise_TRIAL_14_033_1.exe

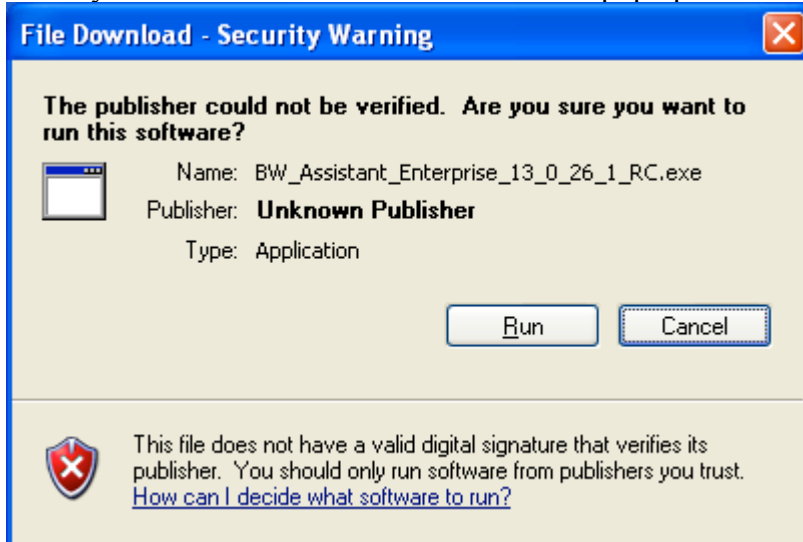
When you do this box will pop up, click open



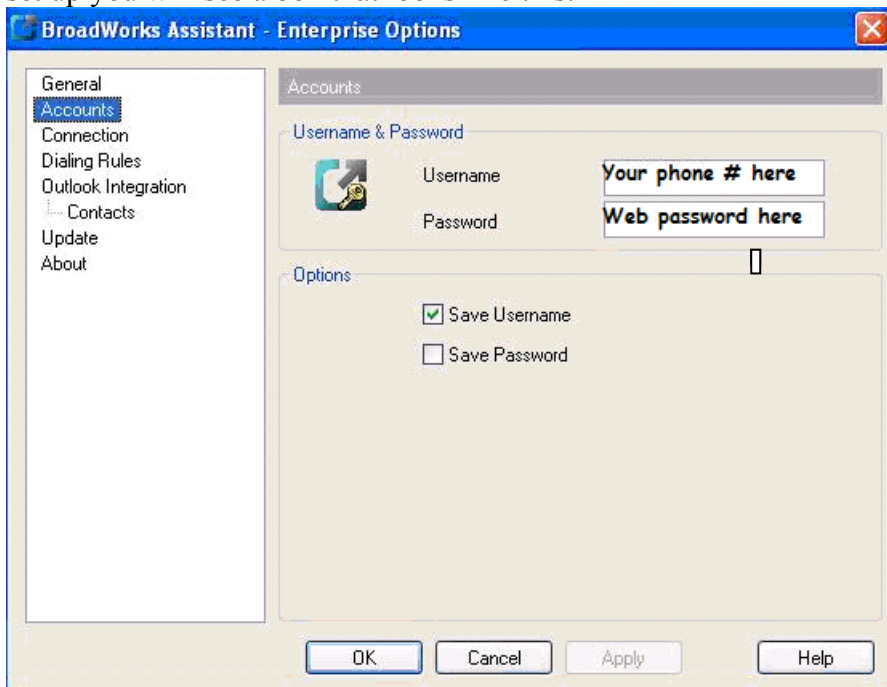
When you click open this window will pop up. Double click on it



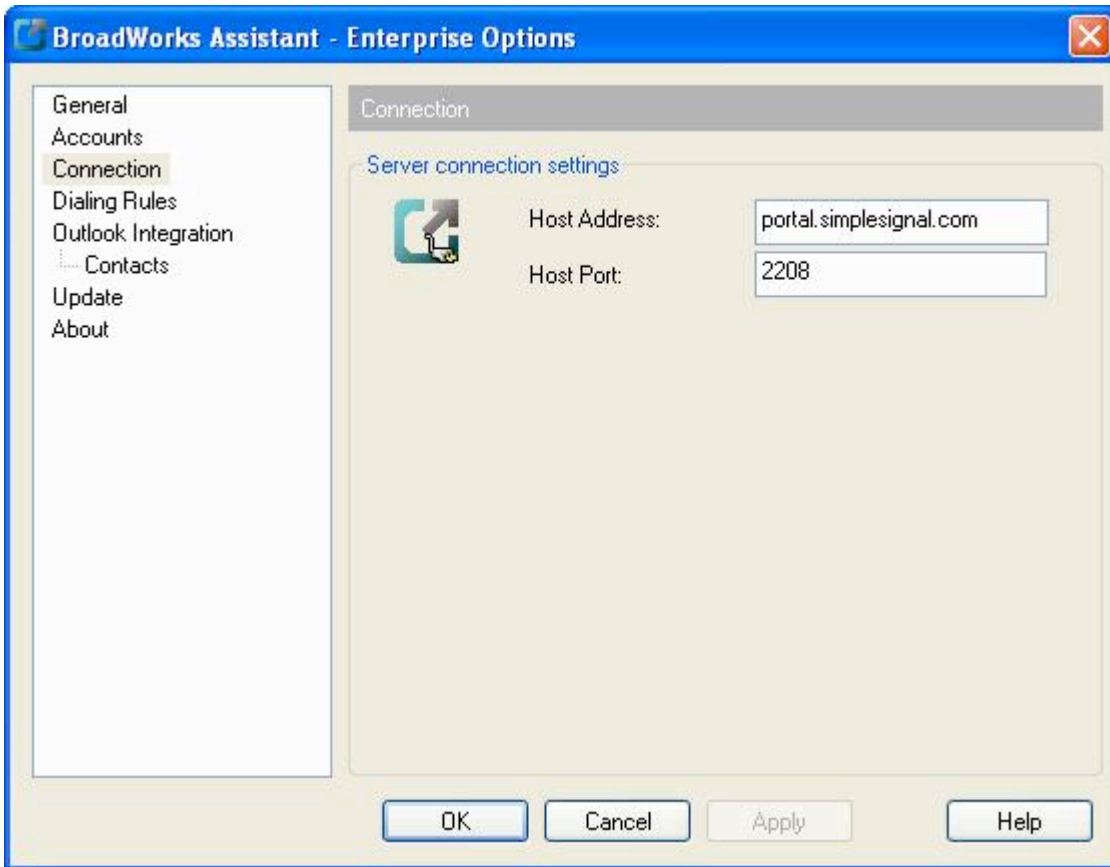
When you double click on it this window will pop up. Click the run button.



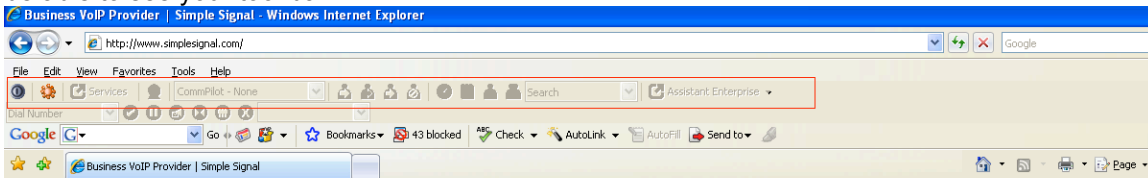
It will then go through the setup for the tool bar. Go through and click on the appropriate options. It will ask you to close everything except the set up of the tool bar. You want to make sure everything is closed or it will not continue. When you come to the end of the set up you will see a box that looks like this:



After You type in your personal phone number and the password click on connections. It should look like this.



When you are finished filling in your information open up a internet explorer window. You should be able to see your tool bar:



On the far left of the tool bar there is your log in button, it looks this:



If you click on the log in button the button will turn green and you will be able to use your tool bar

